



AXEL®

ITALIAN
LIFT
PASSION

Made in
Italy



INGENUITY
GLOBALLY



Our company was founded in 1989 around two core assets, its brand and its people. And, we believe in the principle idea of providing our clients, and or customers with flexible lift solutions. Now, we're one of the best known elevator brands in the world - present in more than 40 countries around the globe.

Since then, Axel has grown to become synonymous with exceptional quality and reliability with the use of precision technology together with exceptional manual craftsmanship.

Headquartered in Milan (Italy), the company is organized in three units: project management, lift and controller manufacturing, thus ensuring flexibility and an exceptional fast response time.

It's common for Axel to provide lifts within a few weeks from the receipt of order. The Axel range is based on an OEM approach of the business: we deliver our products to lift companies and supply them with the technical support in order for them to service their customers.

Moreover, we are one of the few lift companies in the world who can design, develop and tailor-produce customize "Bespoke" solutions to meet the specific wishes, desires, dreams and needs of our clients, and or customers who are architects, developers and engineers who request exclusive individual lifts for their project(s).

FIRST CLASS PRODUCTS

At Axel, we remove chance from the equation by providing superb results consistently in our factory. We are a results driven organization.

Therefore, quality control is taken very serious and this starts with our suppliers. We only accept first class products onto our production line that have been approved by our in-house buying team. And, each lift is tested from inception to completion by our experienced "Quality Control Managers" before delivered to customers.

Quality, functionality, engineering and design are all present in every lift manufactured by Axel down to the smallest details. Come discover the company and the people behind the brand.



At Axel, all of our components and materials are carefully selected to ensure natural resources are used in a manner which does not adversely affect the environment.

All supplier-side items used in our production methodology are selected using strict criteria.

The elevator factory in Milan has lead by example with taken a leading role in reducing its energy consumption levels.

Since 1996, Axel has been at the forefront involving quality and quality assurance within its manufacturing processes by becoming one of the first lift companies to obtain ISO 9001 approval (and vision 2000). In addition, Axel gained approval in accordance to the Lift Directive (95/16/EC - schedule XIII).

Therefore, all of our lifts comply with the European standard EN81. We also design, engineer and manufacture lifts according to Russian standards, Britain's DDA and other standards upon request.

Each of our lifts are handled as a separate project and is fully documented and traceable through all stages of its elaboration for its Management of environmental issues.



QUALITY &
ENVIRONMENT
MANAGEMENT
SYSTEMS







HELIPAD

INNOVATIVE PRODUCTION TECHNOLOGY & CRAFTSMANSHIP

Axel lifts are manufactured in our factory in Milan, Italy since 1989 using only the highest quality materials, fittings and production methods. Every processing stage is carefully carried out, checked and monitored. And, only after the completion of these stages is the product passed as acceptable to be used in the end product. An ongoing certification of Quality Management system supports the company's self-imposed philosophy of delivering only the best product to our clients, and or customers.



LONG LIFESPAN TESTED

To ensure you can enjoy your elevator for many years to come all materials used are subjected to a number of endurance tests to make sure they will stand up to the rigors of every day life use. As you would expect only the best results are acceptable.



AXEL INTELLIGENT TECHNOLOGY POWERS ROBOTICS



Axel has pioneered an intelligent technology that interacts with robotic systems, and allows the robots to assume full control of lift operations.

The inputs and outputs are communicated via CAN Bus Technology from the lift microprocessor to the I/O panel of the robot WAGO Panel connected to the host server. The robot controls door opening and closing operations, floor selections and any external lift landing call requests via a swipe card security system.

STAINLESS STEEL



BRILLIANCE

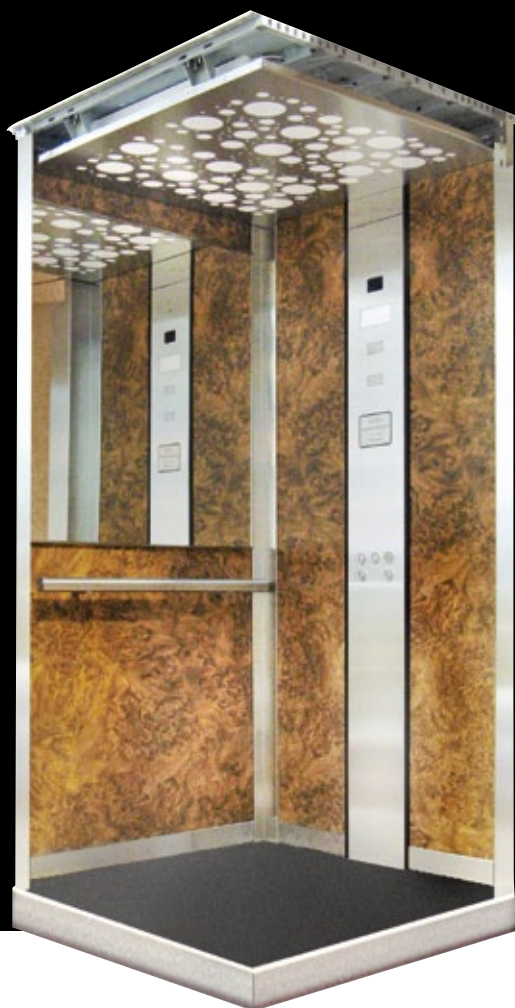
Axel lifts offers beautiful stainless steel, aluminum, glass, real wood veneer laminate, high gloss lacquered finishes, etc.

And, our artistic nature, creativity and vast experience in using these materials give our lifts an unrivalled depth and uniformity to them.

A thorough understanding of the materials we use in our production methods and a keen eye for detail ensures the material attributes are as uniformed as possible, as we use very strict criteria in the selection process of our materials.

The color, grain and moisture content of the wood must meet the very stringent quality standards required for Axel lifts in order to make it to the production process.

PLASTIC LAMINATE

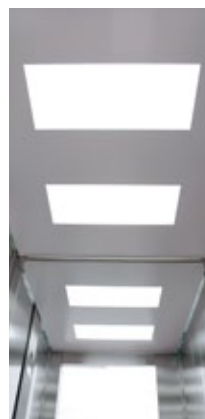


SKIN PLATE



BED LIFTS

Lift cars for beds & goods lifts with special material suitable for medical and clinic environments, anti-slip car floor, bump rails and accessories as per following page.

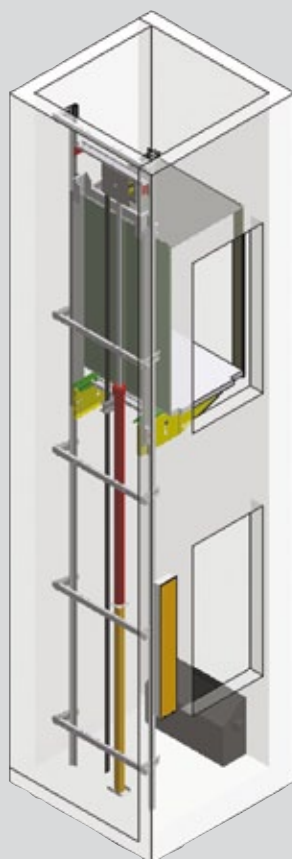


Hospital Lifts

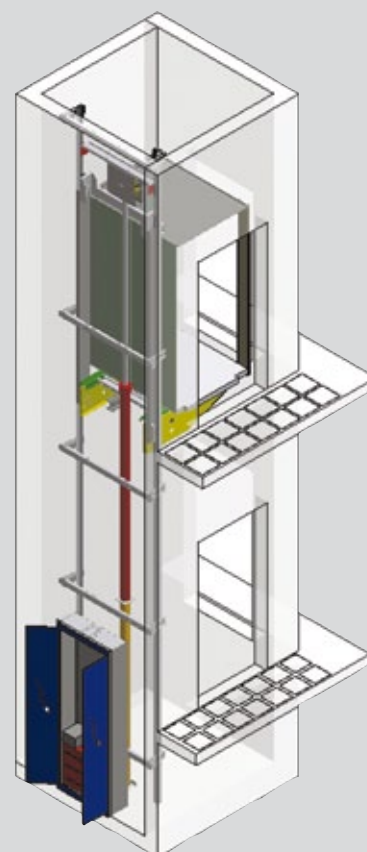
- A wide variety of capacities for general passenger use
- Service capacities for hospital service use
- Rises up to 40 Mts
- Multi-car group configurations
- VVVF Car door operator with single/double door panel on side opening
- Central opening door
- Front and rear-opening configurations

MRL LIFTS

HYDRAULIC

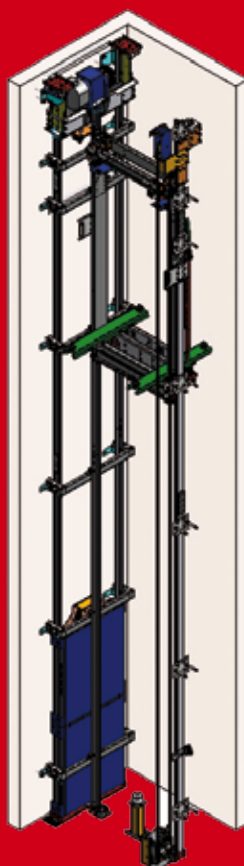


MACHINE ROOM LESS
HYDRAULIC

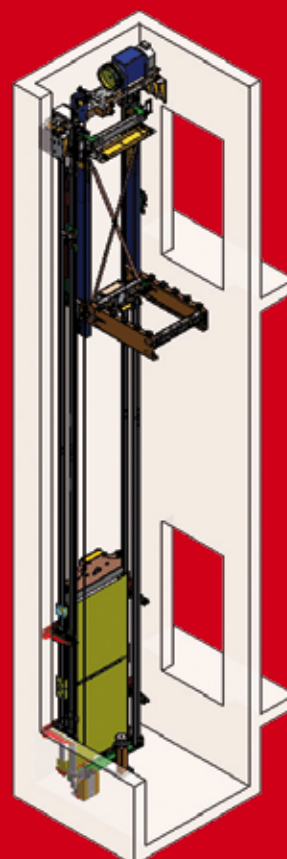


MACHINERY CABINET
HYDRAULIC

GEARLESS



EXEL
GEARLESS

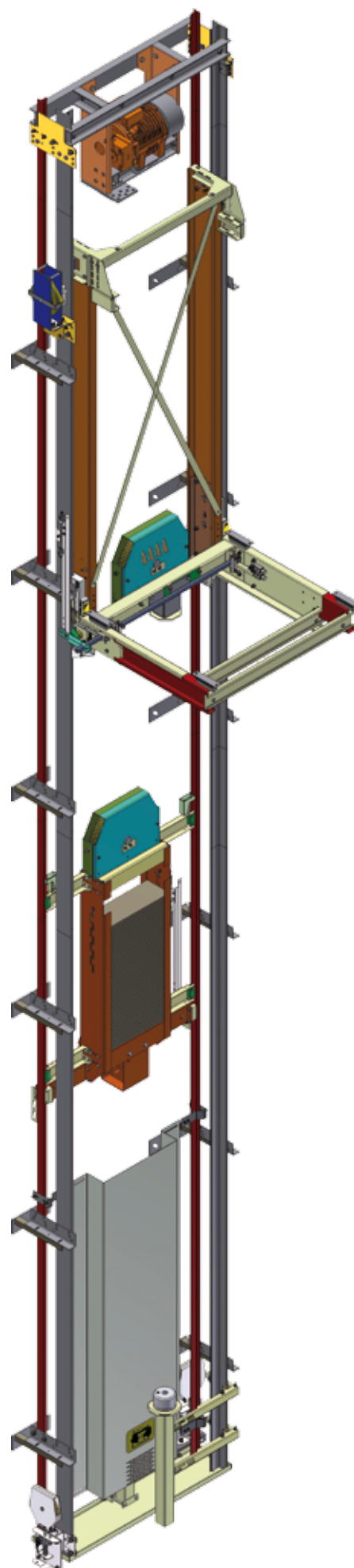


ZEUS
GEARLESS

MRL ZEUS LPH

LOW PIT AND LOW
HEADROOM

Pit: 450 mm
Headroom: 2700 mm
Max capacity: 1000 Kg

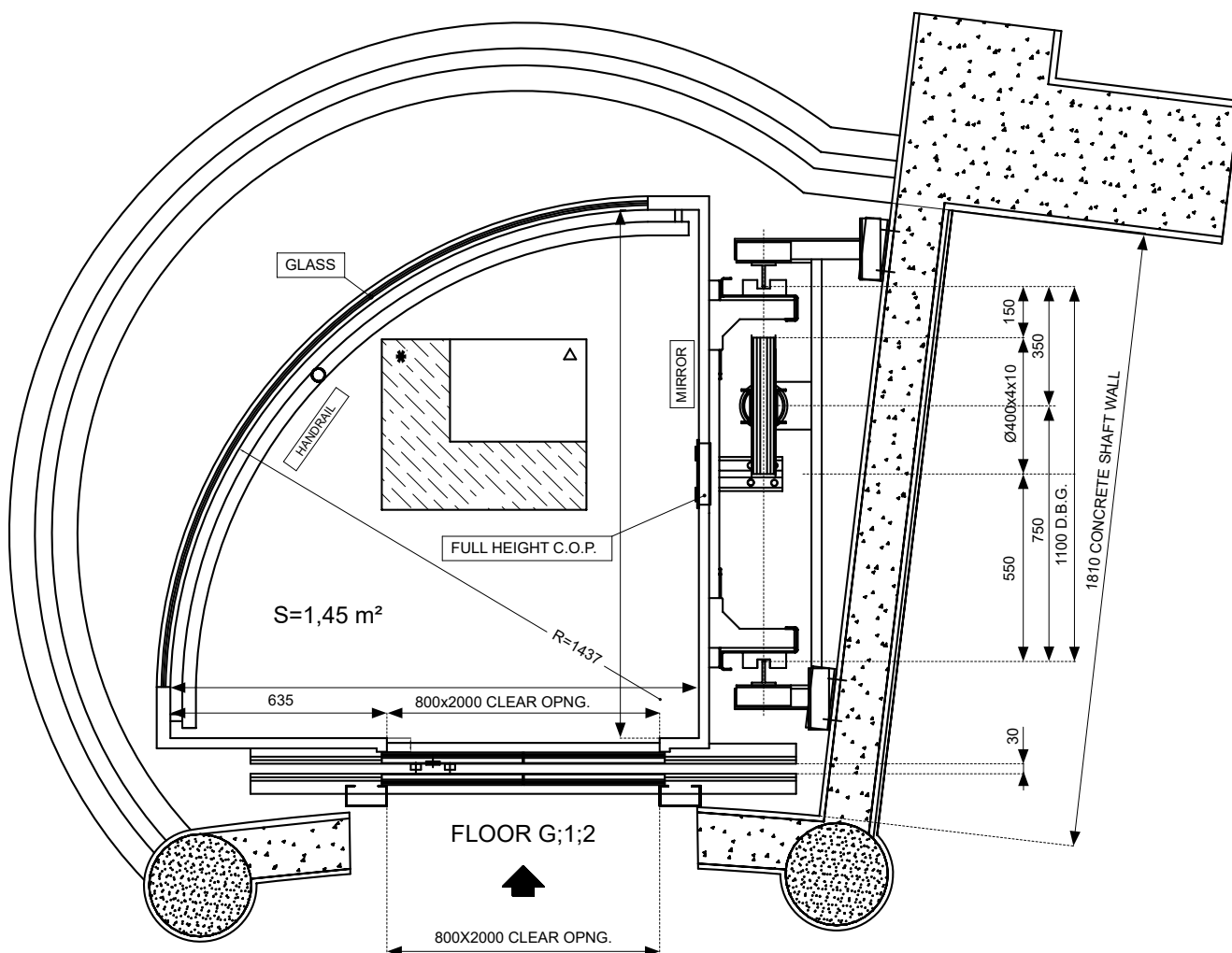


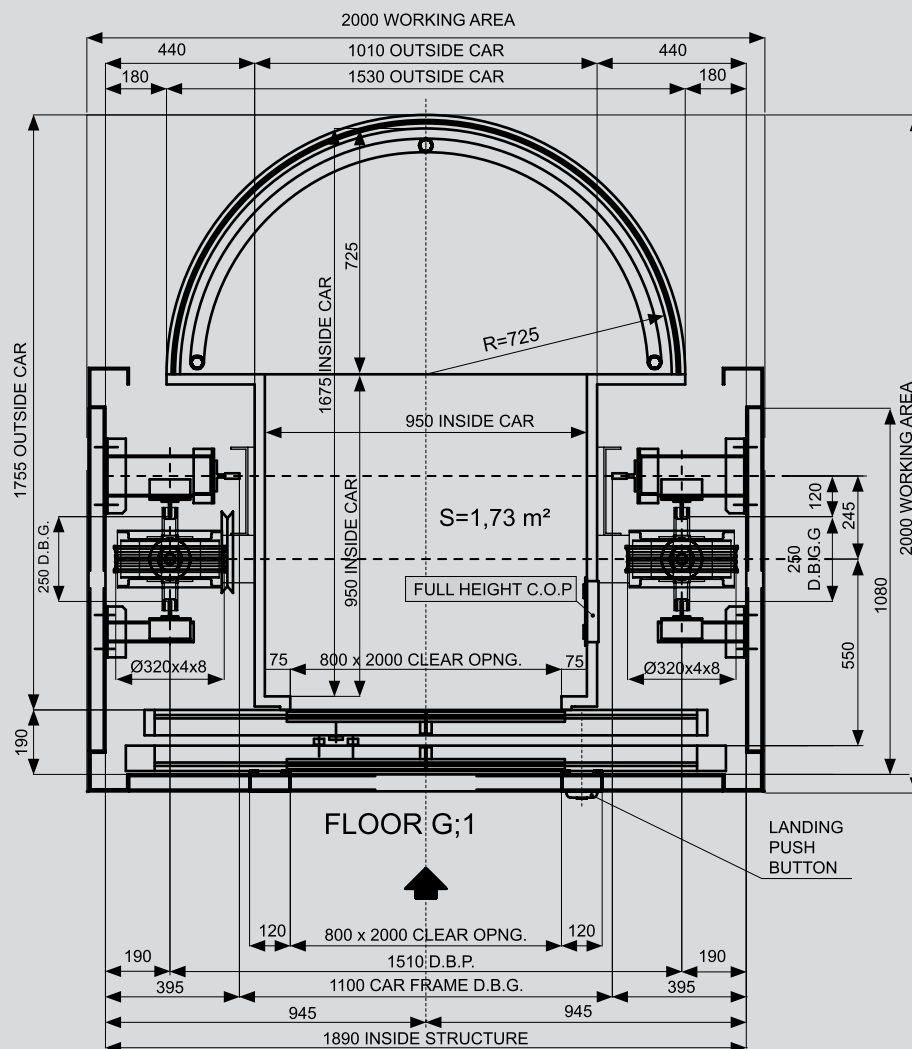
EXEL
LIGHT



ZEUS
LIGHT

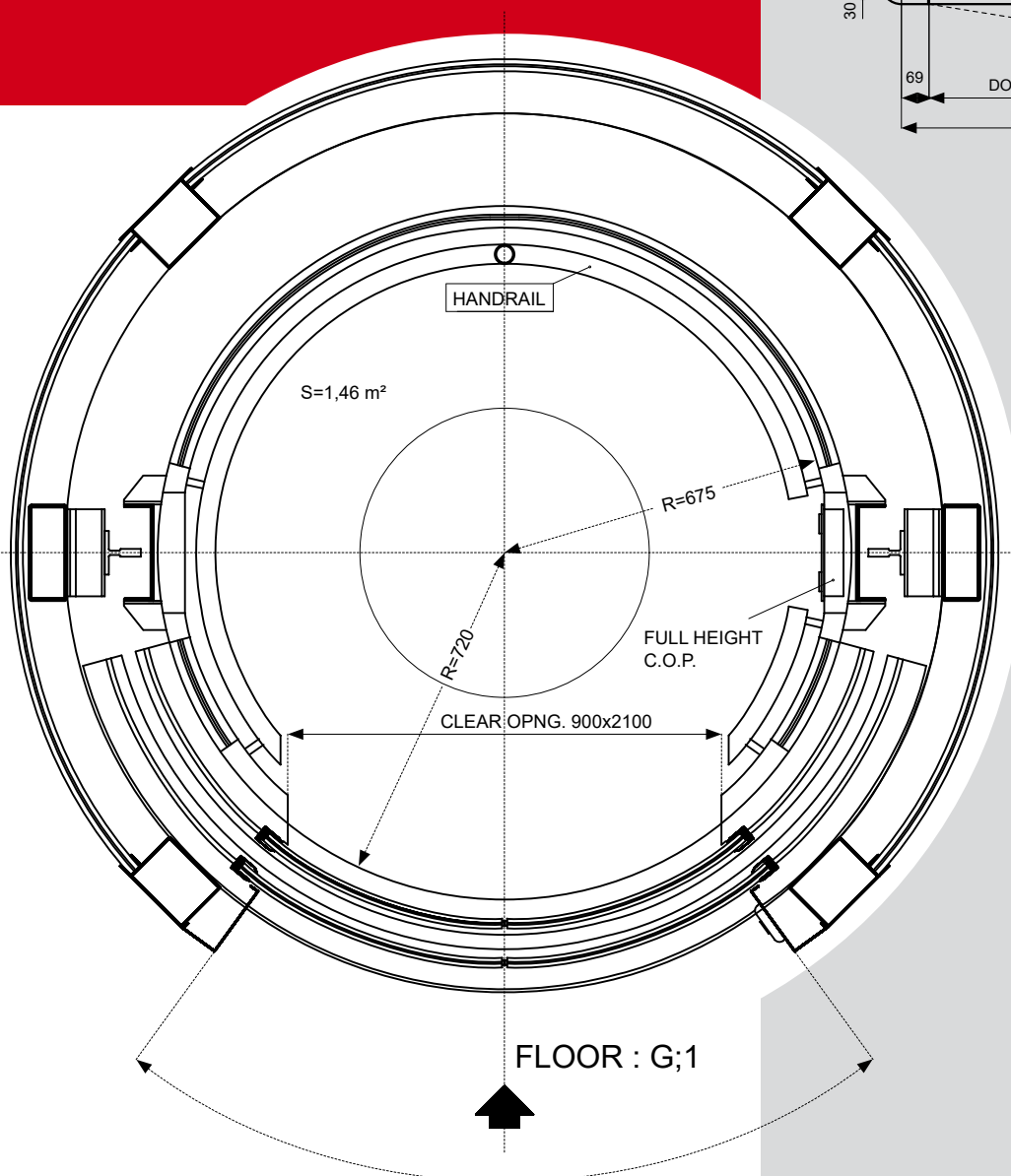
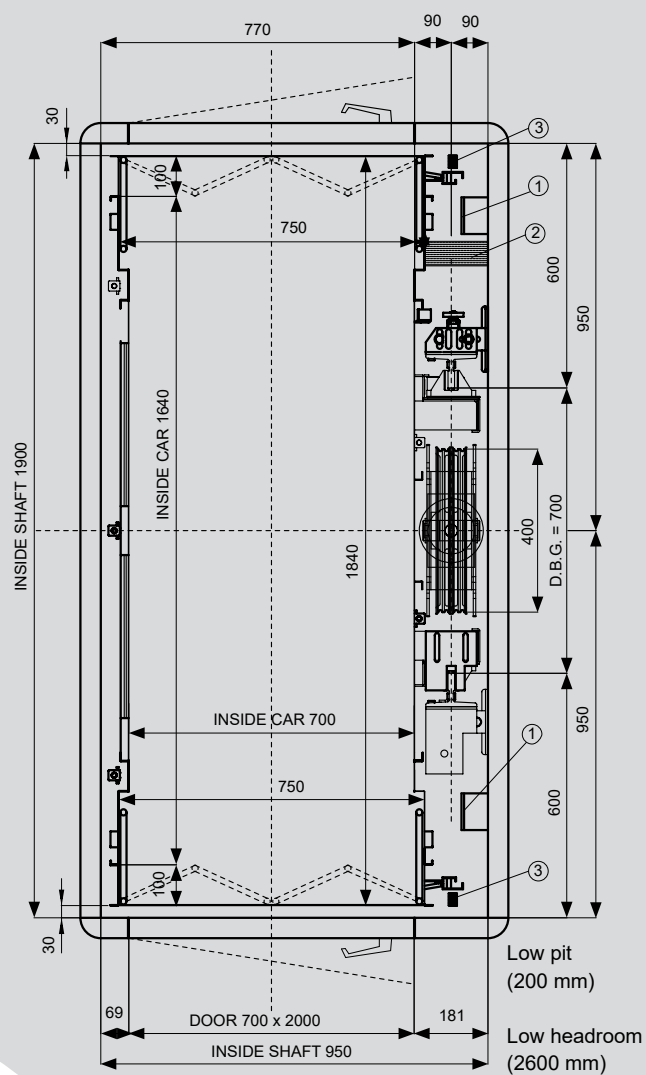
BESPOKE LIFTS





BESPOKE BY AXEL

Manufactured with
exceptional quality in mind
and ingenuity in heart



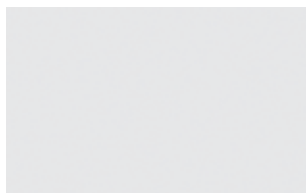
AXEL®



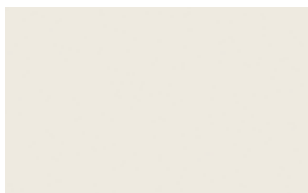
CAR FINISHES | WALLS

Plastic laminate wall finishes

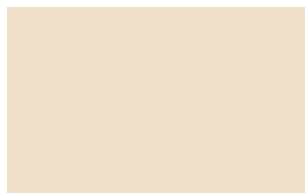
STANDARD



410 BIANCO GHIACCIO



406 BIANCO



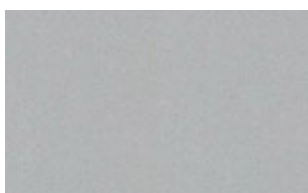
813 BEIGE MANHATTAN



414 SABBIA



475 PEARL GREY



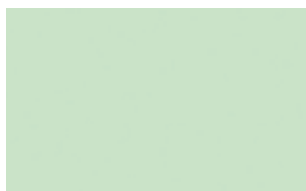
265 SATIN



879 GRIGIO GRAFITE



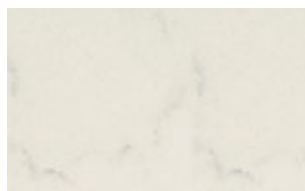
421 LUCIDA BLACK



454 VERDE CARAIBI



430 LILLA GEMINI



977 CARRARA MARBLE



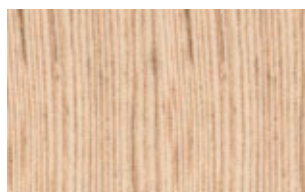
585 DOLOMIA



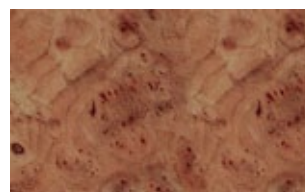
383 ROVERE EUROPA



602 ROVERE BOEMIA



381 DOUGLAS VANILLA

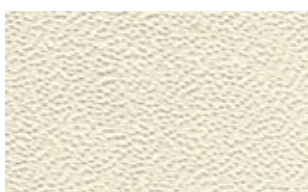


1306 LUCIDA - RADICA OLMO

Skin plate wall finishes



B 13



A 13



F12 PPS

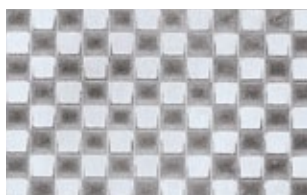


N 1

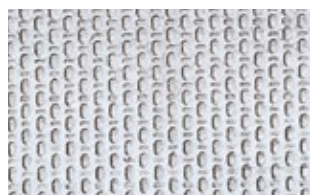


DL 25

Stainless steel wall finishes



DAMA



LINO LUCIDO



QUADRO LUCIDO



5WL LUCIDO



CUOIO LUCIDO



PELLE LUCIDO



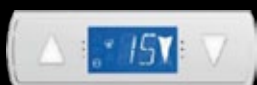
SCOTCH BRITE



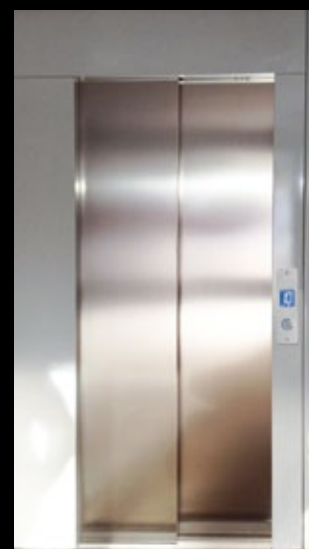
SATINATO

PANELS - PUSH BUTTONS

AXEL

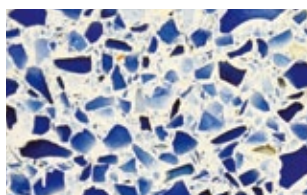


VEGA



CAR FINISHES | FLOORS

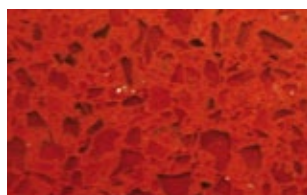
Granite rock solid floors



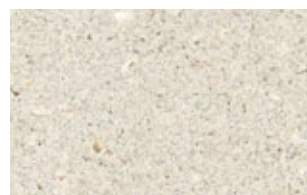
2414 BLUE DREAM



451 WHITE RED



424 RED



616 PERLA BIANCA



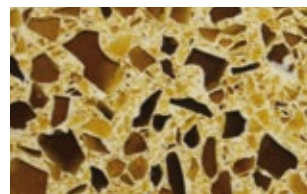
2400 WHITE



671 BLACK STAR



2402 DOVE TAIL

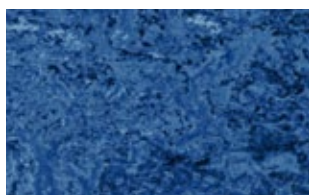


2422 CHIARO AMBRA

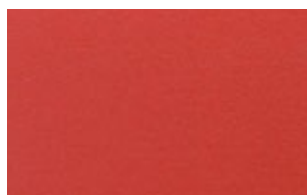
PVC floors



MARMABLE BEIGE



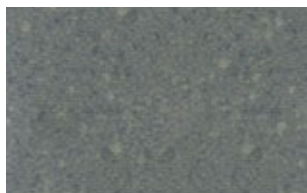
BLUE



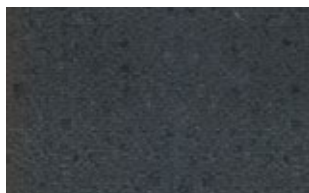
RED



M 15 GREEN

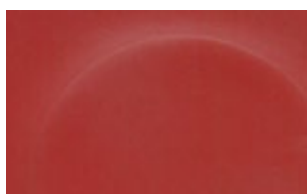


M 02 STONE



M 00 CARBON

Bubble rubber floors



R 904 OCRA



M 004 CARBON DUST

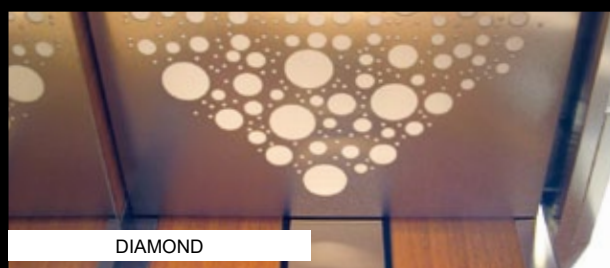
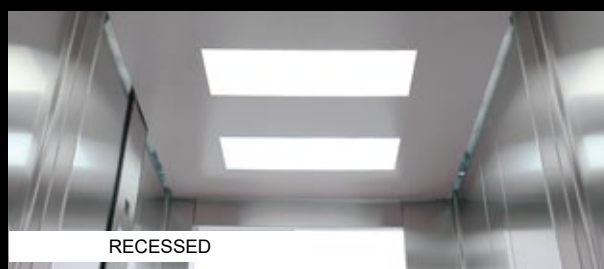
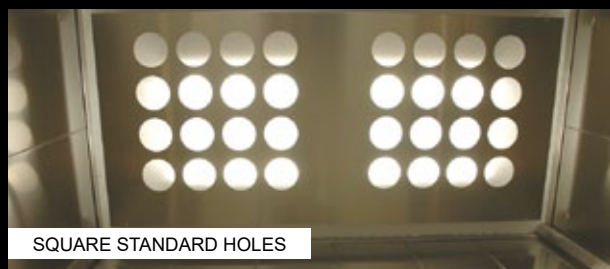


G 804 METAL

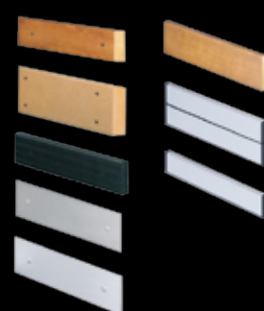
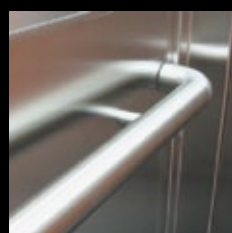
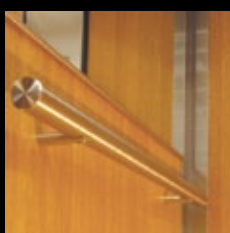
CAR FINISHES

23

Lightings



Hand Bump rails - Skirtings



EXEL LIGHT Machine roomless lift with gearless motor

ITEM	UNIT	STANDARD MODELS											
Load	kg	320	480	630	800	1000	1000						
Passengers	-	4	6	8	10	13	13						
Shaft	W (mm)	1400	1550	1700	1950	2000	1700						
	D (mm)	1460	1660	1760	1760	2200	2460						
Car internal dimensions	W (mm)	800	950	1100	1350	1400	1100						
	D (mm)	1100	1300	1400	1400	1600	2100						
Door (H=2000mm)	W (mm)	700	800	800 / 900	800 / 900	900	900						
Speed	m/s	1	1.6	1	1.6	1	1.6	1	1.6	1	1.6	1	1.6
Pit	mm	1300	1350	1300	1350	1300	1350	1400	1450	1400	1450	1400	1450
Headroom*	mm	3450	3500	3450	3500	3450	3500	3450	3500	3450	3500	3450	3500
Motor power	kW	3	4.5	4	5.5	4,4	7.1	5,4	8.6	7	10.5	7	10.5
Current	A	8,6	13.7	12	16.7	13,5	23.3	14,8	22.9	18	22.3	18	22.3

Control Board Cabinet Dim. W 260 x D 170 x H 1800

ZEUS LIGHT Machine roomless lift with gearless motor

ITEM	UNIT	STANDARD MODELS				
Load	kg	320	480	630	800	1000
Passengers	-	4	6	8	10	13
Shaft	W (mm)	1350	1500	1655	1990	2000
	D (mm)	1450	1680	1780	1780	2080
Car internal dimensions	W (mm)	800	950	1100	1350	1400
	D (mm)	1070	1300	1400	1400	1600
Door (H=2000mm)	W (mm)	700	800	800 / 900	800 / 900	900
Speed	m/s	1	1	1	1	1
Pit	mm	1000	1000	1000	1000	1000
Headroom*	mm	3400	3400	3400	3400	3400
Motor power	kW	3	3.4	4.5	6	7.5
Current	A	11.5	13.1	15.7	15.4	21.2

Control Board Cabinet Dim. W 260 x D 170 x H 1800



Handrail



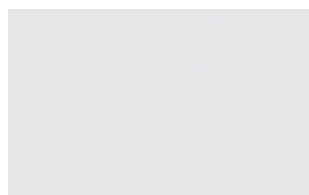
K04



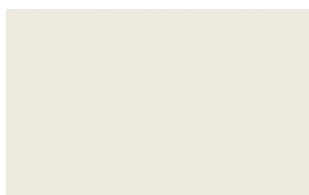
K13

Plastic laminate wall finishes

STANDARD



410 BIANCO GHIACCIO



406 BIANCO



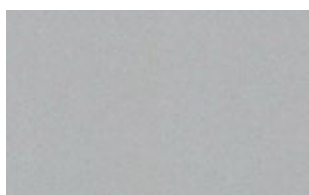
813 BEIGE MANHATTAN



414 SABBIA



475 PEARL GREY



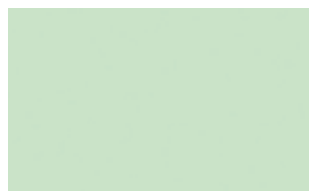
265 SATIN



879 GRIGIO GRAFITE



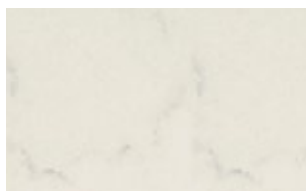
421 LUCIDA BLACK



454 VERDE CARAIBI



430 LILLA GEMINI



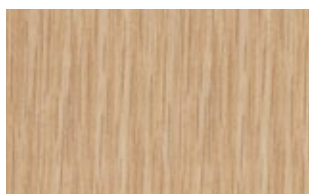
977 CARRARA MARBLE



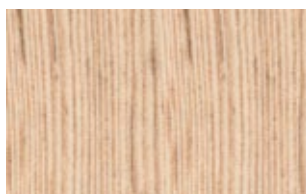
585 DOLOMIA



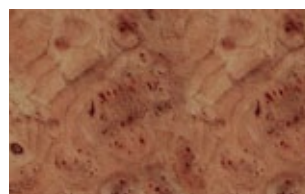
383 ROVERE EUROPA



602 ROVERE BOEMIA



381 DOUGLAS VANILLA



1306 LUCIDA - RADICA OLMO

Stainless steel wall finishes



LINO LUCIDO



PELLE LUCIDO

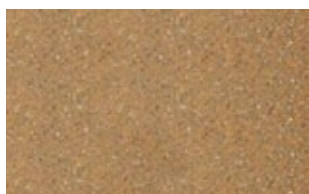


QUADRO LUCIDO

Rubber flooring



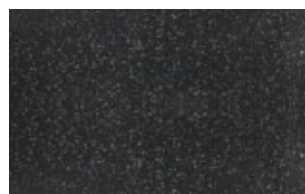
T11



T13



T30



T35

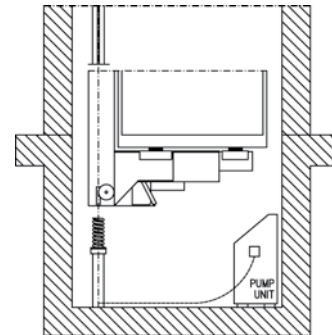
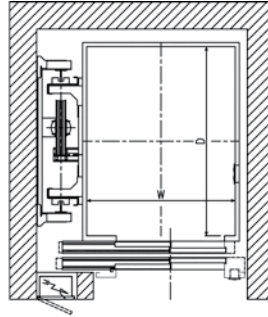
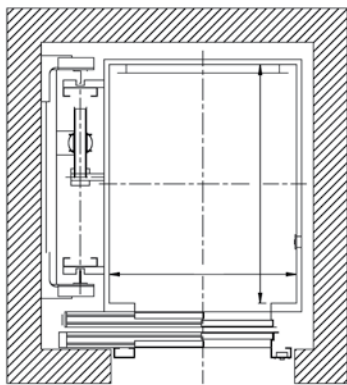
TECHNICAL FEATURES

Note: All specs based on car height of 2200 mm
 *: Headroom calculated with an internal car height of 2130 mm
 Legend: W = width; D = depth; H = height

Standard hydraulic lifts with machine room

ITEM	UNIT	STANDARD MODELS													
Load	kg	320		400		480		630		800		1000		1500	
Passengers	-	4		5		6		8		10		13		20	
Shaft	W (mm)	1500		1500		1500	1600	1600		1700	1900	1900	1600	2100	
	D (mm)	1500		1600		1700	1600	1800		2000	1800	2000	2500	2800	
Car internal dimensions	W (mm)	900		950		950	1100	1100		1200	1350	1400	1100	1400	
	D (mm)	1000		1100		1300	1200	1400		1600	1400	1600	2100	2400	
Door (H=2000mm)	W (mm)	800		800		800		800		800 / 900		800 / 900		900 / 1100	
Speed	m/s	0.63	1	0.63	1	0.63	1	0.63	1	0.63	1	0.63	1	0.63	1
Pit	mm	1000	1100	1000	1100	1000	1100	1200	1300	1200	1300	1200	1300	1400	1500
Headroom*	mm	3400	3500	3400	3500	3400	3500	3400	3500	3400	3500	3400	3500	3400	3500

Standard hydraulic lifts with machine room



Pump unit in pit

Hydraulic MRL in pit

Hydraulic MRL in pit with extractable controller

CONTROLLER					
ITEM	W (mm)	D (mm)		H (mm)	
"A"	220	325		1640	
ITEM	UNIT	MODELS			
Load	kg	480	630*	1000*	1000*
Passengers	-	6	8	13	13
Shaft	W (mm)	1650	1650	1650	1850
	D (mm)	1700	1800	2500	2500
Car internal dimensions	W (mm)	950	1100	1100	1100
	D (mm)	1300	1400	2100	2100
Door (H=2000mm)	W (mm)	800	800	800	900
Speed	m/s	0.62	0.62	0.50	0.50
Pit	mm	1200	1200	1200	1200
Headroom*	mm	3400	3400	3400	3400

* 630 kg: travel 12000 mm max

*1000 kg: travel 6000 mm max

Hydraulic MRL in pit with recessed controller

CONTROLLER					
ITEM	W (mm)	D (mm)		H (mm)	
"B"	300	170		2220	
ITEM	UNIT	MODELS			
Load	kg	480	630*	1000*	1000*
Passengers	-	6	8	13	13
Shaft	W (mm)	1500	1560	1900	1650
	D (mm)	1700	1800	2000	2500
Car internal dimensions	W (mm)	950	1100	1400	1100
	D (mm)	1300	1400	1600	2100
Door (H=2000mm)	W (mm)	800	800	800 / 900	
Speed	m/s	0.62	0.62	0.50	0.50
Pit	mm	1200	1200	1200	1200
Headroom*	mm	3400	3400	3400	3400

* 630 kg: travel 12000 mm max

*1000 kg: travel 6000 mm max

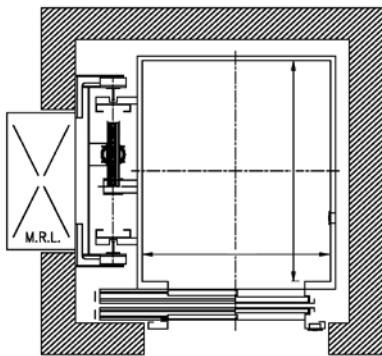
Standard hydraulic lifts with machine room

ITEM	UNIT	STANDARD MODELS											
Load	kg	320	400	480	630	800	1000						
Passengers	-	4	5	6	8	10	13						
Shaft	W (mm)	1500	1500	1500	1600	1600	1700	1900	1900	1900	1600		
	D (mm)	1500	1600	1700	1600	1800	2000	1800	2000	2000	2500		
Car internal dimensions	W (mm)	900	950	950	1100	1100	1200	1350	1400	1400	1100		
	D (mm)	1000	1100	1300	1200	1400	1600	1400	1600	1600	2100		
Door (H=2000mm)	W (mm)	800	800	800	800 / 900	800 / 900	800 / 900	800 / 900	800 / 900	800 / 900	800 / 900		
Speed	m/s	0.63	1	0.63	1	0.63	1	0.63	1	0.63	1	0.63	1
Pit	mm	1000	1100	1000	1100	1000	1100	1200	1300	1200	1300	1200	1300
Headroom*	mm	3400	3500	3400	3500	3400	3500	3400	3500	3400	3500	3400	3500
Motor power	kW	7.7	11	9.5	14.7	9.5	18.4	12.5	22	14.7	29.4	18.4	29.4
Current	A	19	26.6	21.9	31.8	21.9	39.9	28.5	48	31.8	63.7	39.9	63.7



MRL cabinets available

MODEL	I	II
W (mm)	870	1000
D (mm)	400	650
H (mm)	2100	2100



Standard electrical lifts with machine room on top

ITEM	UNIT	STANDARD MODELS											
Load	kg	320	400										
Passengers	-	4	5										
Shaft	W (mm)	1500	1500										
	D (mm)	1500	1700										
Car internal	W (mm)	900	950										
	D (mm)	1000	1100										
Door (H=2000mm)	W (mm)	800	800										
Speed	m/s	0.6	1/ ■	1.6 ■	0.6	1/ ■	1.6 ■						
Pit	mm	1100	1100	1400	1100	1100	1400						
Headroom*	mm	3400	3450	3600	3400	3450	3600						
Motor Power	kW	3.0	3.3 / ■ 3.3	4.3	3.3	4.0 / ■ 4.0	6.4						

2 speed motors: 0.6/0.15 - 1.00/0.25 m/s
 ■ Value with VVF motor control

Standard electrical lifts with machine room on top

ITEM	UNIT	STANDARD MODELS															
Load	kg	480	630	800	1000	1500											
Passengers	-	6	8	10	13	20											
Shaft	W (mm)	1500	1600	1600	1700	1800	1900	1700	2200								
	D (mm)	1900	1800	2000	2200	2000	2200	2500	2800								
Car internal	W (mm)	950	1100	1100	1200	1350	1400	1100	1400								
	D (mm)	1300	1200	1400	1600	1400	1600	2100	2400								
Door (H=2000mm)	W (mm)	800	800	800 / 900	800 / 900	800 / 900	800 / 900	800 / 900	900 / 1100								
Speed	m/s	0.6	1/ ■	1.6 ■	0.6	1/ ■	1.6 ■	0.6	1/ ■	1.6 ■	0.6	1/ ■	1.6 ■	0.6	1/ ■	1.6 ■	
Pit	mm	1100	1100	1400	1100	1100	1400	1100	1100	1400	1100	1100	1400	1100	1100	1400	
Headroom*	mm	3400	3450	3600	3400	3450	3600	3400	3450	3600	3400	3450	3600	3400	3450	3600	
Motor Power	kW	4.0	5.0 / ■ 4.3	7.9	4.4	6.0 / ■ 5.8	9.5	6.4	8.5 / ■ 7.9	11.5	7.20	11.2 / ■ 9.5	13.5	11.2	14.2 / ■ 13.5	19.1	

2 speed motors: 0.6/0.15 - 1.00/0.25 m/s
 ■ Value with VVF motor control

TECHNICAL FEATURES

Note: All specs based on car height of 2200 mm
 *: Headroom calculated with an internal car height of 2130 mm
 Legend: W = width; D = depth; H = height

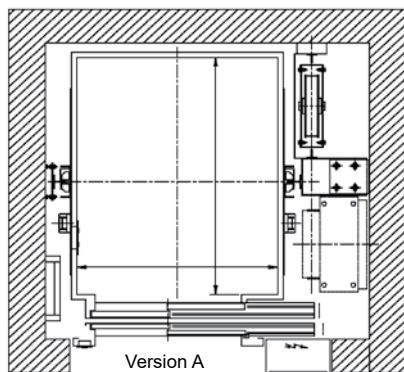
EXEL Machine roomless lift with gearless motor

ITEM	UNIT	STANDARD MODELS															
Load	kg	480		630		800		1000		1000		1600		2000			
Passengers	-	6		8		10		13		13		21		26			
Shaft	W (mm)	1620		1770		1980		2050		1780		2300		2550			
	D (mm)	1700		1750		1750		2000		2450		2600		3000			
Car internal dimensions	W (mm)	950		1100		1350		1400		1100		1400		1600			
	D (mm)	1300		1400		1400		1600		2100		2400		2600			
Door (H=2000mm)	W (mm)	800		800 / 900		800 / 900		900		900		1200		1300			
Speed	m/s	1	1.6	2	1	1.6	2	1	1.6	1	1.6	1	1.6	1	1.6	1	1.6
Pit	mm	1300	1350	1400	1300	1350	1400	1400	1450	1400	1450	1400	1450	1400	1450	1400	1450
Headroom*	mm	3450	3500	3600	3450	3500	3600	3450	3500	3450	3500	3450	3500	3450	3500	3450	3500
Motor power	kW	4	6.3	8	5	8	10	6.5	10.4	8	13	8	13	10	16	13	21
Current	A	7.6	12	15	10	15.7	19.6	12.5	20	15.6	25	15.6	25	26	43	36.5	58.8

Control Board Cabinet Dim. W 260 x D 170 x H 1800

EXEL

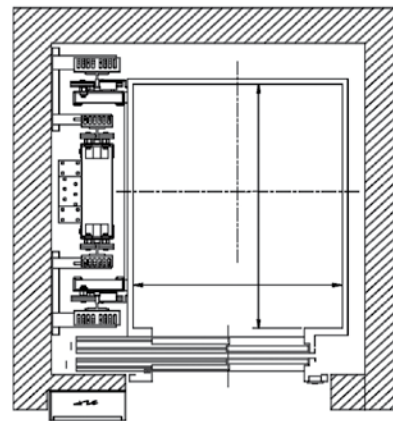
Version B: more shaft space available



ZEUS

Shaft dimensions indicated are for single entrance

Fire fighting and water proof options available



ZEUS Machine roomless lift with gearless motor

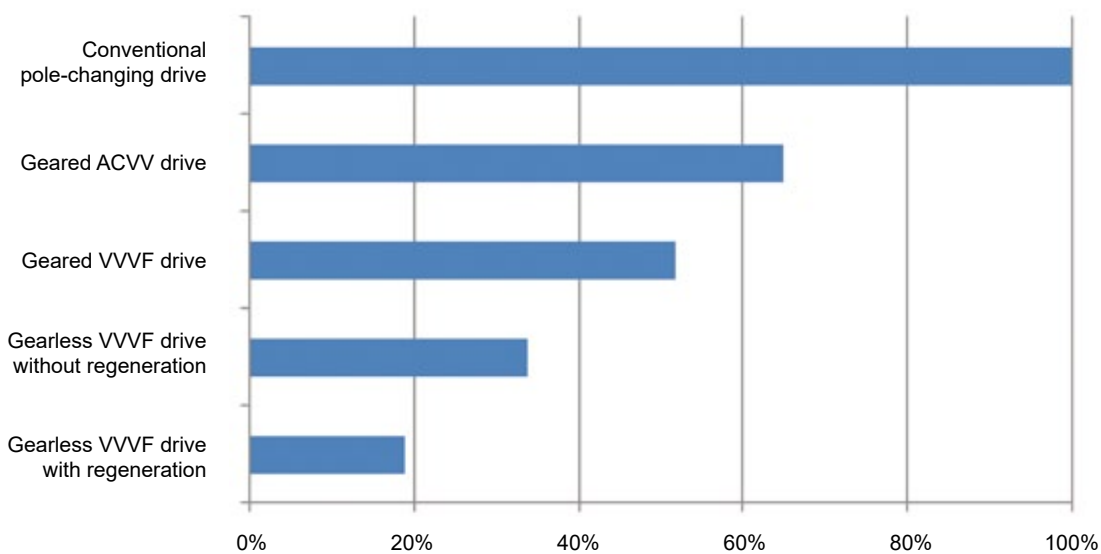
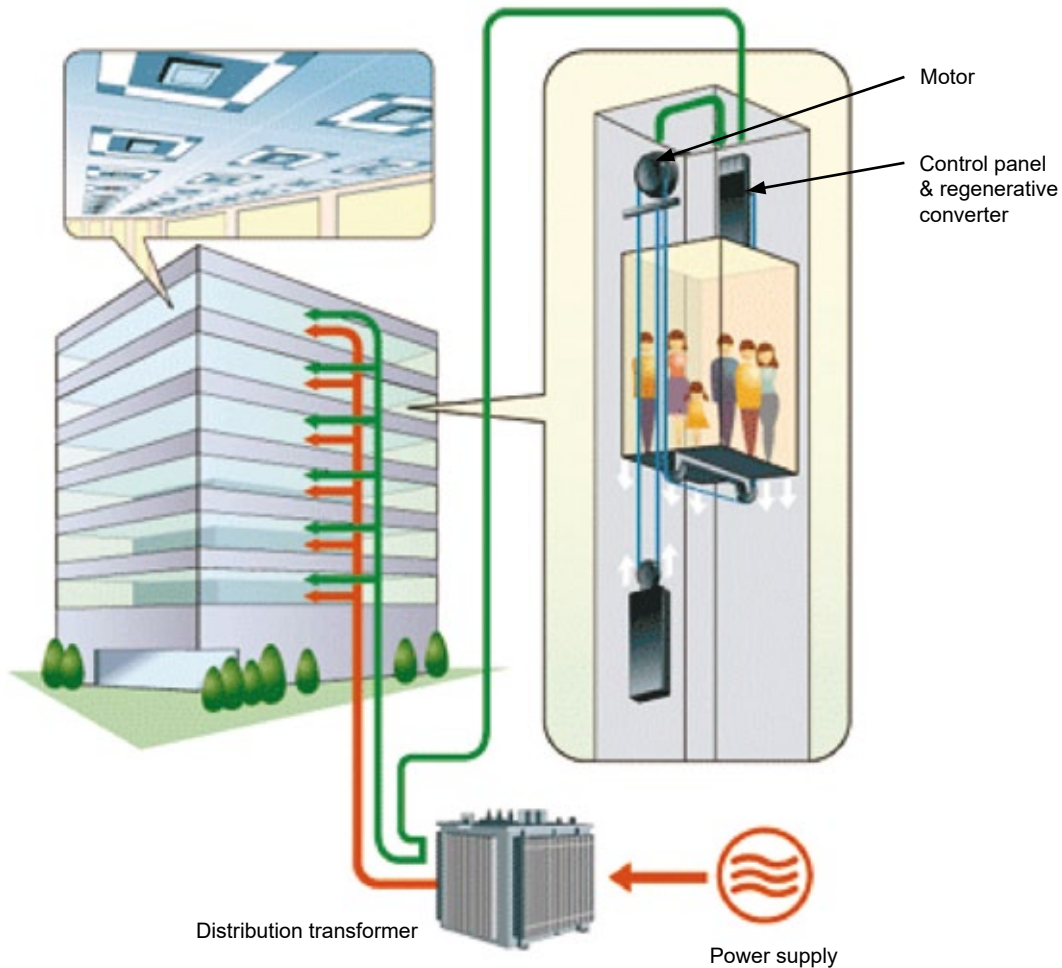
ITEM	UNIT	STANDARD MODELS															
Load	kg	480		630		800		1000		1000							
Passengers	-	6		8		10		13		13							
Shaft	W (mm)	1500		1600		1600		1850		1700		1900		1600			
	D (mm)	1700		1600		1800		1800		2000		2000		2500			
Car internal dimensions	W (mm)	950		1100		1100		1350		1200		1400		1100			
	D (mm)	1300		1200		1400		1400		1600		1600		2100			
Door (H=2000mm)	W (mm)	800		800 / 900		800 / 900		800 / 900		900		900					
Speed	m/s	1	1.2	1.6	1	1.2	1.6	1	1.2	1.6	1	1.2	1.6	1	1.2	1.6	1.6
Pit	mm	1300	1350	1400	1300	1350	1400	1300	1350	1400	1300	1350	1400	1300	1350	1400	1400
Headroom*	mm	3450	3500	3550	3450	3500	3550	3450	3500	3550	3450	3500	3550	3450	3500	3550	3550
Motor power	kW	4	6.3	8	5	8	10	6.5	7.7	10.4	8	9.7	13	8	9.7	13	13
Current	A	7.6	12	15	10	15.7	19.6	12.5	15	20	15.6	18.7	25	15.6	18.7	25	25

Control Board Cabinet Dim. W 260 x D 170 x H 1800

ENERGY SAVING WITH ENERGY RECOVER TECHNOLOGY

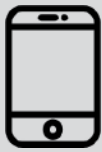
29

Energy savings in lifts, using different technologies, can be seen. **The use of a regenerative gearless VVVF drive can reduce the consumed energy to 19%**, when compared to a conventional system, using a pole changing drive (two-speed induction motor).



AXEL CONTROLLER

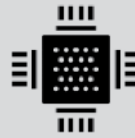
Advanced Solution



Complete control through your smartphone or laptop, with **no apps needed**



The board natively creates a Wi-Fi hotspot you can connect to, **protected by a password**



State-of-the-art microprocessor that allows the board to function **without contactors** (contactorless)



Compact and practical, only 10 x 21 cm (3.9"x8.2")



Modular System

- Default 8 stops (APB or up/down collective)
- Expandable up to 64 stops (128 entrances)
- Unlimited underground floors
- User interface
- Parameters programming
- Maintenance
- Doors control
- Calls input
- Errors registration and diagnostic
- Date/time settings

Logics

- APB
- Down collective
- Up/down collective
- APB/Collective
- Multiplex (up to 4 lifts)

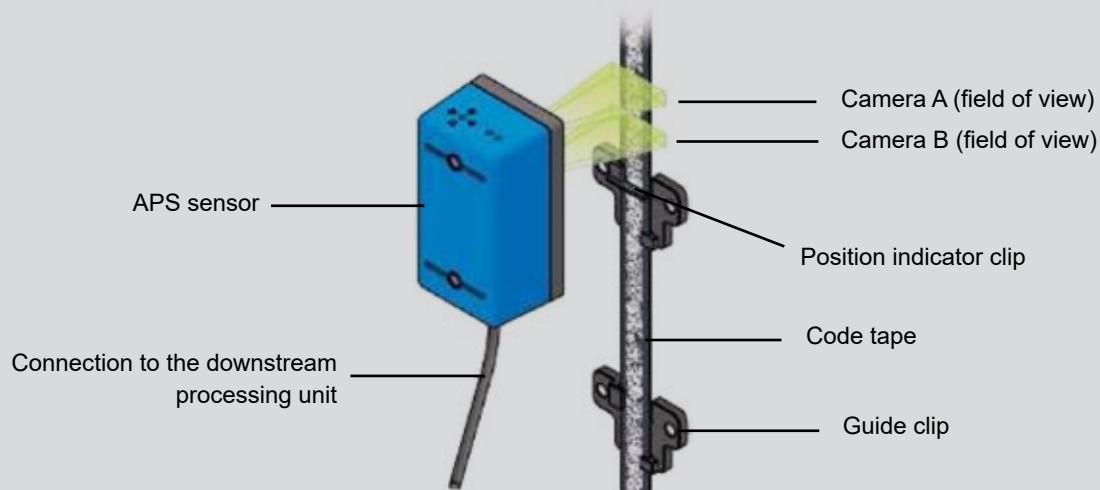
Emergency device

- Return to floor and door opening
- Autodialer

Rules

- EN 81-1/2
- 95/16 CE
- EN 81-70/72/73/77
- EN 81-20/50
- Controller CE certified in compliance with the directive 2014/30UE and 2014/33UE
- EN 12015 and 12016 electromagnetic emission and immunity
- Conformity certificate

Available with **ABSOLUTE POSITIONING SYSTEM**





COMPANY PROFILE

"Axel srl was founded in 1989 by partners from several European countries with the simple idea of providing customers with a flexible lift solution.

Since then, Axel has grown to become synonymous with quality and reliability".

Headquartered in Milan (Italy), the company is organised in three units: project management, lift and controller manufacturing, thus ensuring flexibility and fast response. The Axel range is based on an OEM approach of the business: we deliver our product(s) to lift companies and supply them with the technical support needed to service their customers; construction and engineering companies. It is also not uncommon for Axel to supply and/or develop custom tailored solutions to meet the specific needs of architects and developers.

QUALITY

Axel was among the first lift companies to obtain ISO 9001 approval (and vision 2000) back in 1996.

In addition, Axel is approved in accordance with the Lift Directive (95/16/EC - schedule XIII). All of our lifts comply with the European standard EN81. We also supply the lifts according to Britain's DDA and other standards on request. Each lift is handled as a separate project and is fully traceable and documented through all the stages of its elaboration.



UNI EN ISO 9001:2000 - n° 9102.AXE1
CE CONFORMITY - IMQ N° I 0333
DIRECTIVE 95/16/CE



WORLDWIDE PRESENCE

Axel has installed thousands of lifts around the world in more than 30 countries. We serve customers in the European Union, Eastern Europe, Middle East, Africa, Asia and Australia either by direct presence or through approved distributors or agents.



ITALIAN
LIFT
PASSION

AXEL Srl

Via C. Borsini, 14
20094 Corsico (Milano), Italy
T. +39 02 4586 2301 | F. +39 02 4501174
axelsrl@axelsrl.com | www.axelsrl.com

Ed. 3/2019